



2/2 Jugan Street Mount Hawthorn WA

2 1 1

Set in a quiet, secure complex of only 6, this 2 bedroom, 1 bathroom Townhouse is sure to impress.

View : <https://www.prestigepropertyperth.com.au/lease/wa/northern-suburbs/mount-hawthorn/residential/townhouse/5773903>

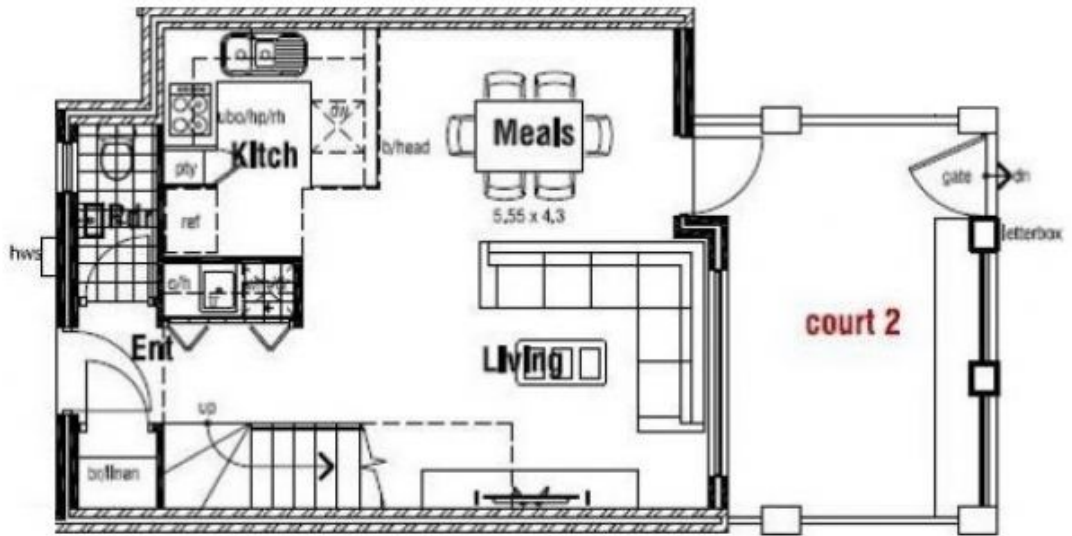
The stylish townhouse comes unfurnished and offers air conditioning, modern kitchen, timber flooring, open plan living, spacious bedrooms, courtyard, balcony, separate toilet and European laundry.

Ideally located less than 500m walk to the Glendalough Train Station, and situated within easy accessibility to the vibrant Mount Hawthorn parkland, shopping and cafe precinct...act now before you miss out!

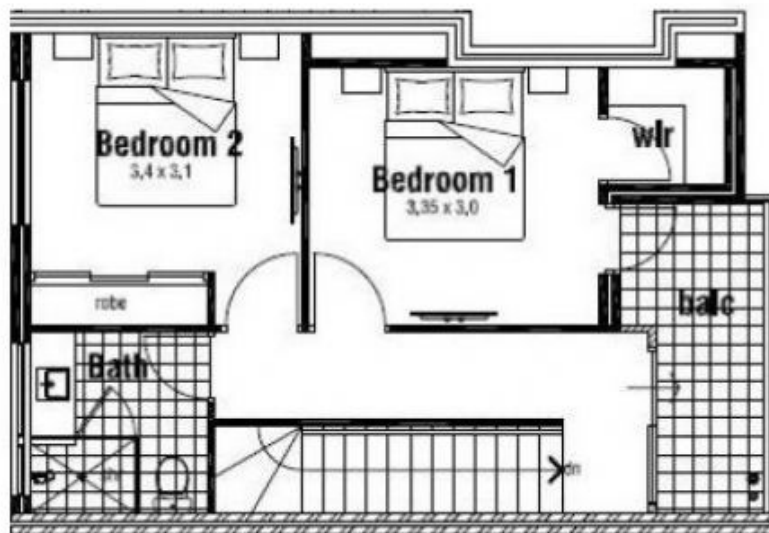


Lauren Jetten
08 6225 5151

Features include, but are not limited to;
? Well appointed, modern kitchen with stone bench tops, breakfast bar, double sink and plenty of cupboard space
? Quality stainless steel kitchen appliances including



GROUND FLOOR



FIRST FLOOR