



2 Bridgedale Close Beldon WA

3  1  1 

Fresh, clean and ready to go is this fabulous 3 Bedroom, 1 Bathroom home that features fabulous corner street appeal with an enormous 36sqm side access workshop, that also has the added bonus of potential subdivision!

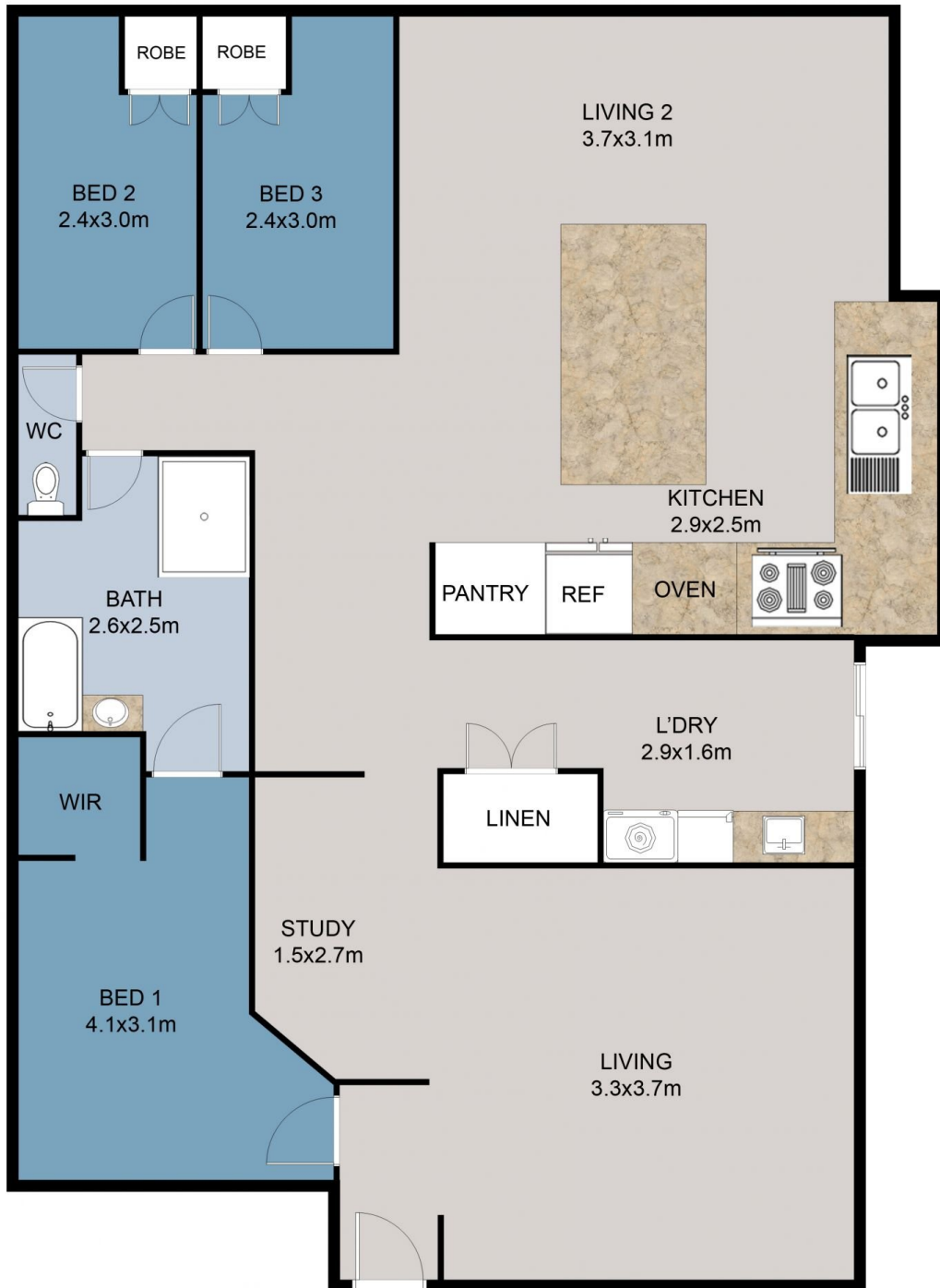
Upon entry, this home immediately begins to reveal its size and homely qualities, starting with the large front lounge and generous master bedroom suite, that comes complete with a generous walk in robe and semi ensuite bathroom that has been fully renovated.

As you move through the home, it opens up into a large fresh tiled open plan living area, that flows conveniently around the stylish kitchen, which offers an abundance of cupboard and bench space, quality stainless steel appliances and an open view of the rear yard. This entire section of the home is light and bright with large windows,

Land Size : 713 sqm
View : <https://www.prestigepropertyperth.com.au/sale/wa/northern-suburbs/beldon/residential/house/5773936>



Glenn Williams
08 6225 5151



FLOOR PLAN

This floor plan including furniture, fixture measurements and dimensions are approximate and for illustrative purposes only. Boxbrownie.com gives no guarantee, warranty or representation as to the accuracy and layout. All enquiries must be directed to the agent, vendor or party representing this floor plan.

2 Bridgedale Close, Beldon