

**182 Labouchere Road Como WA**

4 2 1

SERIOUS POTENTIAL ON THE BEAUTIFUL SWAN RIVER

"VIEWING POSSIBLE ANYTIME BY APPOINTMENT - CALL NOW TO VIEW"

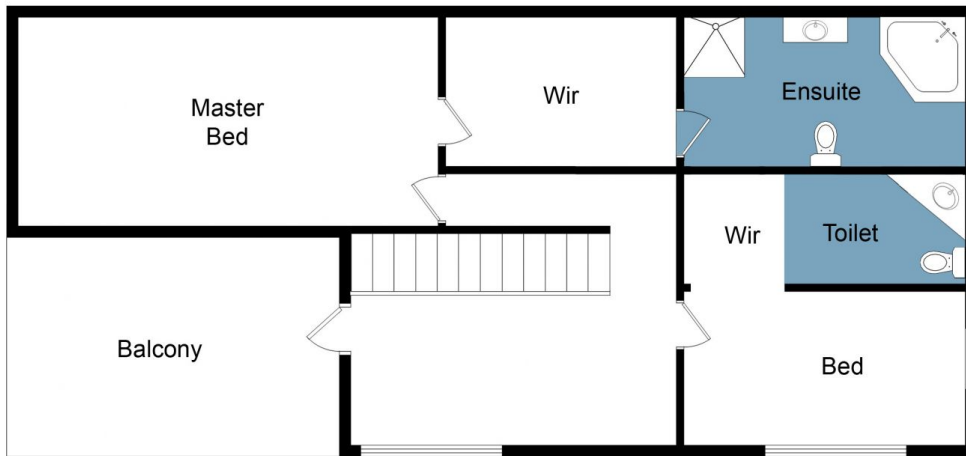
You will be impressed with this 4 bedroom + study / 5th bedroom, 2 bathroom two storey home, that is situated in a convenient lifestyle location! Offering large, spacious living areas, a well appointed and functional kitchen, spacious bedrooms, large rear yard and stunning river views from the second story, PLUS there is still plenty of potential to add value should you wish to upgrade in the future.

The entry of the home is completely private, and provides loads of additional parking and security via the electric entry gate at the end of the driveway, which all leads to the

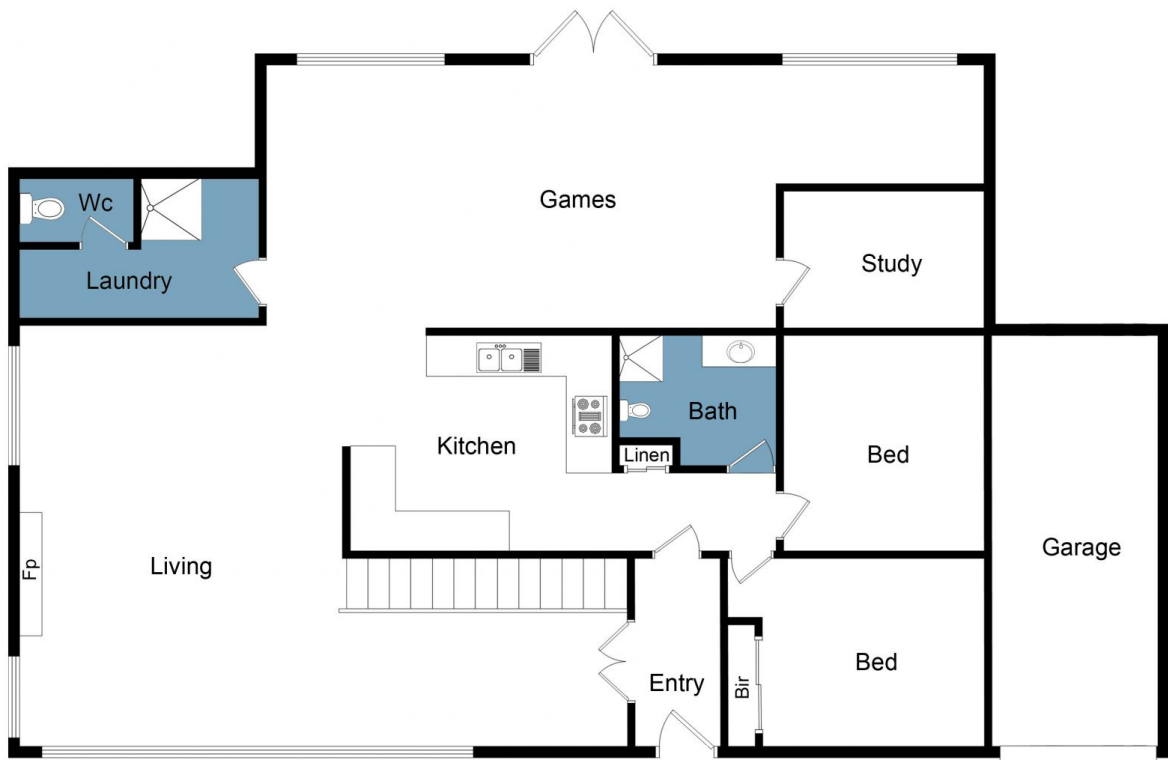
**Building Size** : 212 sqm  
**Land Size** : 500 sqm  
**View** : <https://www.prestigepropertyperth.com.au/sale/wa/southern-suburbs/como/residential/house/5773947>



**Glenn Williams**  
08 6225 5151



FIRST FLOOR PLAN



GROUND FLOOR PLAN

This floor plan including furniture, fixture measurements and dimensions are approximate and for illustrative purposes only. Boxbrownie.com gives no guarantee, warranty or representation as to the accuracy and layout. All enquiries must be directed to the agent, vendor or party representing this floor plan.

182 Labouchere Road, Como