



## 29 New England Drive Hillarys WA

4 2 3

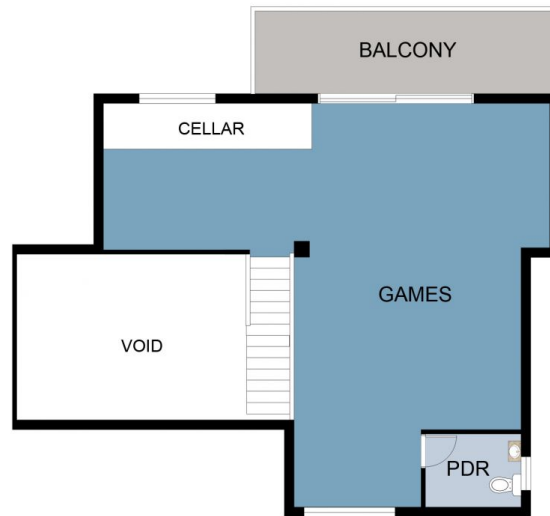
From the moment you step foot on this property, you will be in awe of the size, the elegance, the grandeur and the attention to detail. This feeling is even further accentuated when you step into the stunning entry. It features soaring ceilings, sparkling timber floors and an open mezzanine style, looking straight up the glass floating staircase to the wine cellar and huge games room. This great home is built around the central kitchen, dining & living areas with double height ceilings, feature bulkhead ceilings and large bi-fold doors to create the perfect indoor / outdoor living feel.

The large kitchen is an chefs delight. Offering an array of cabinetry, new Caesarstone tops with waterfall ends, black tap wear and sink wear, walk in pantry, 2 Electrolux Pyrolytic Steam Ovens, Electrolux Full Black Induction Stove, Electrolux Rangehood, Integrated AEG Dishwasher, Glass shadow mirror splashback, Imported Black Zip Hydrotap,

**Building Size** : 305 sqm  
**Land Size** : 801 sqm  
**View** : <https://www.prestigepropertyperth.com.au/sale/wa/northern-suburbs/hillarys/residential/house/5858699>



**Glenn Williams**  
08 6225 5151



FIRST FLOOR PLAN



GROUND FLOOR PLAN

This floor plan including furniture, fixture measurements and dimensions are approximate and for illustrative purposes only. Boxbrownie.com gives no guarantee, warranty or representation as to the accuracy and layout. All enquiries must be directed to the agent, vendor or party representing this floor plan.

29 New England Dr, Hillarys