

3 Karralea Way Pearsall WA

4 2 2

There's more than enough room for everyone in this enormous 4 bedroom, 2 bathroom, PLUS Study and Theatre Room family home, that is ideally located within the very popular family raising suburb of Pearsall. The moment you walk in the front door, and into the large and inviting entry, you are greeted with a sense of space & homeliness.

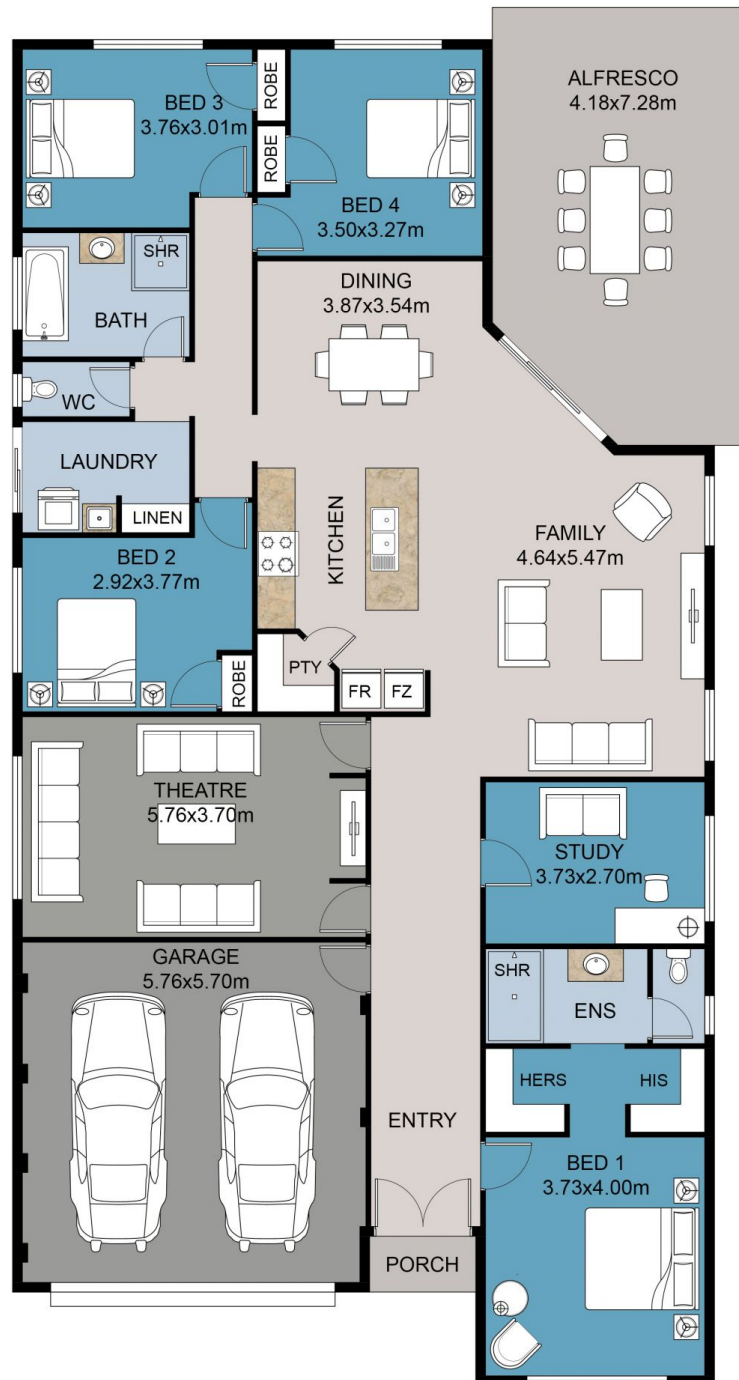
Boasting a generous master bedroom, that is light & bright, and features a huge walk in robe that offers two sides for convenient 'his & hers' style storage. This fabulous main suite also features a larger than normal ensuite that offers a huge double shower plus plenty of storage under the double vanity along with a separated toilet.

Also near the front of the home is a large study, that offers more than enough room in which to create the ideal dream

Building Size : 281 sqm
Land Size : 568 sqm
View : <https://www.prestigepropertyperth.com.au/sale/wa/northern-suburbs/pearsall/residential/house/7373367>



Steven Gough
08 6225 5151



FLOOR PLAN

This floor plan including furniture, fixture measurements and dimensions are approximate and for illustrative purposes only. BoxBrownie.com gives no guarantee, warranty or representation as to the accuracy and layout. All enquiries must be directed to the agent, vendor or party representing this floor plan.

3 Karralea Way, Pearsall